



*Kenton C. Ward, Surveyor*

*Phone (317) 776-8495*

*Fax (317) 776-9628*

*Suite 188*

*One Hamilton County Square*

*Noblesville, Indiana 46060-2230*

December 9, 2005

To: Hamilton County Drainage Board

Re: Canal Place Drain, Thomas West Arm, Timberstone Section 1

Attached is a petition and plans for the proposed relocation of the Canal Place Drain, Thomas West Arm. The relocation is being proposed by Precedent Residential Development, LLC. The proposal is to relocate the drain across parcel 13-15-12-00-00-009.000 owned by Precedent Residential Development, LLC. The drain will be relocated with the Timberstone Section 1 project per plans by Falcon Engineering, Job Number 121.3 as shown on Sheets 2, 2A and 15.

This line will consist of the following:

12" RCP	83 L.F.	30" RCP	216 L.F.
18" RCP	186 L.F.	33" RCP	238 L.F.
21" RCP	218 L.F.	Open Ditch	495 L.F.
24" RCP	255 L.F.		

The open ditch listed above is that which runs through the retention ponds as measured by straight line (within the future section) between the inlet and outlet.

The retention ponds # 6 and 7 located in Common Area "J" and the future sections east of Section 1 are not be considered part of the regulated drain. Only the inlet and outlet will be maintained as part of the regulated drain. The maintenance of the ponds will be the responsibility of the Homeowners Association. The Board will however retain jurisdiction for ensuring the storage volume for which the lake was designed will be retained, thereby, allowing no fill or easement encroachments.

The total length of new tile shall be 1,691 feet. The 1,505 feet of original drain between Sta. 19+21 and Sta. 34+26 shall be vacated. This proposal will add an additional 186 feet to the drains total length.

The cost of the relocation is to be paid by Precedent Residential Development, LLC. Because the project is to be paid by the petitioner and is within the boundaries of the petitioner's property the project falls under the requirements as set out in IC 36-9-27-52.5. Therefore, a hearing is not required for the petition.

The petitioner has provided the Performance Bond as follows:

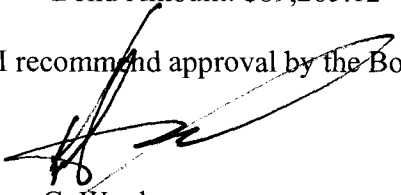
Name of Bonding Co. Bank: Bond Safeguard Insurance Company

Bond Number: 5013387

Bond Date: September 27, 2004

Bond Amount: \$89,265.12

I recommend approval by the Board at this time.



Kenton C. Ward  
Hamilton County Surveyor

KCW/pll

HAMILTON COUNTY DRAINAGE BOARD  
NOBLESVILLE, INDIANA

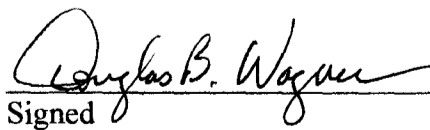
IN RE: \_\_\_\_\_ )  
Hamilton County, Indiana )

PETITION FOR RELOCATION AND RECONSTRUCTION

\_\_\_\_\_  
Precedent Residential Development, LLC (hereinafter "Petitioner"),  
hereby petitions the Hamilton County Drainage Board for authority to relocate and improve a  
section of the \_\_\_\_\_ Thomas West Arm - Canal Place Regulated \_\_\_\_\_ Drain, and in support of  
said petition advises the Board that:

1. Petitioner owns real estate through which a portion of the \_\_\_\_\_ Thomas West Arm  
Drain runs.
2. Petitioner plans to develop its real estate with roads, buildings, utilities, storm drains,  
sanitary sewers and other structures.
3. Petitioner's proposed development of its real estate will require relocation and  
reconstruction of a portion of the \_\_\_\_\_ Thomas West Arm \_\_\_\_\_ Drain, as  
specifically shown on engineering plans and specifications filed with the Hamilton  
County Surveyor.
4. The work necessary for the proposed relocation and reconstruction will be undertaken at  
the sole expense of the Petitioner and such work will result in substantial improvement to  
the \_\_\_\_\_ Thomas West Arm \_\_\_\_\_ Drain, without cost to other property owners  
on the watershed of the \_\_\_\_\_ Thomas West Arm \_\_\_\_\_ Drain.
5. Proposed relocation and reconstruction will not adversely affect other land owners within  
the drainage shed.
6. Petitioner requests approval of the proposed relocation and reconstruction under  
IC 36-9-27-52.5.

WHEREFORE, Petitioner requests that an Order issued from the Hamilton County  
Drainage Board authorizing relocation and reconstruction of the \_\_\_\_\_ Thomas West Arm  
Drain, in conformance with applicable law and plans and specifications on file with the Hamilton  
County Surveyor.

  
\_\_\_\_\_  
Signed  
Douglas Wagner  
\_\_\_\_\_  
Printed



Kenton C. Ward, CFM  
 Surveyor of Hamilton County  
 Phone (317) 776-8495  
 Fax (317) 776-9628

Suite 188  
 One Hamilton County Square  
 Noblesville, Indiana 46060-2230

To: Hamilton County Drainage Board

February 11, 2009

Re: Canal Place Drain: Timberstone Relocation of the Thomas West Drain

Attached are as-builts, certificate of completion & compliance, and other information for Timberstone Relocation of the Thomas West Drain. An inspection of the drainage facilities for this section has been made and the facilities were found to be complete and acceptable.

During construction, changes were made to the drain, which will alter the plans submitted with my report for this drain-dated December 9, 2005. The report was approved by the Board at the hearing held December 22, 2005. (See Drainage Board Minutes Book 8, Pages 570-571)

The changes are as follows:

Structure:	Length:	Size	Material:	Up Invert:	Dn Invert	Grade:	Changes:
55-54	213	30	RCP	832.53	831.39	0.54	-1
Ex413-57	169	24	RCP	834.33	832.85	0.88	1
57-56	19	24	RCP	832.85	832.77	0.42	-1
56-55	30	24	RCP	832.77	832.53	0.8	
22-21	175	18	RCP	831.5	830.97	0.3	-11
21-14	257	24	RCP	830.97	830.62	0.14	2
14-13	172	33	RCP	830.62	830.16	0.27	1
13-12	56	33	RCP	830.16	830.01	0.27	11
1-2	90	12	RCP	829.8	828.23	1.74	7

**RCP Pipe Totals:**

12	90
18	175
24	475
30	213
33	228
<b>Total:</b>	<b>1181</b>

<b>Other Drain:</b>	
Open ditch	495
<b>Total:</b>	<b>495</b>

The length of the drain due to the changes described above is now **1676 feet**.

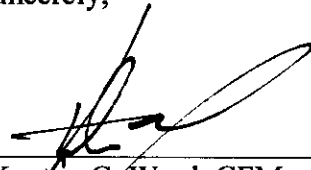
The non-enforcement was approved by the Board at its meeting on December 22, 2005 and recorded under instrument # 200500084914.

The following sureties were guaranteed by Bond Safeguard Insurance Company and released by the Board on its November 14, 2005 meeting.

**Bond-LC No:** 5013387  
**Insured For:** Storm Sewers  
**Amount:** \$89,265.12  
**Issue Date:** September 27, 2004

I recommend the Board approve the drain's construction as complete and acceptable.

Sincerely,

A handwritten signature in black ink, appearing to read 'K. Ward', is written over a horizontal line.

Kenton C. Ward, CFM  
Hamilton County Surveyor

KCW/slm

CERTIFICATE OF COMPLETION AND COMPLIANCE

To: Hamilton County Surveyor

Re: *Timberstone, Sector 1*  
*Thomas West Legal Drain*

I hereby certify that:

1. I am a Registered Land Surveyor or Engineer in the State of Indiana.
2. I am familiar with the plans and specifications for the above referenced subdivision.
3. I have personally observed and supervised the completion of the drainage facilities for the above referenced subdivision.
4. The drainage facilities within the above referenced subdivision to the best of my knowledge, information and belief have been installed and completed in conformity with all plans and specifications.
5. The drainage facilities within the above referenced subdivision to the best of my knowledge, information and belief have been correctly represented on the Record Drawings, Digital Record Drawings and the Structure Data Spreadsheet.

Signature: *Al E. Skoog, Jr.* Date: *3/22/07*

Type or Print Name: *Alvin E. Skoog, Jr.*

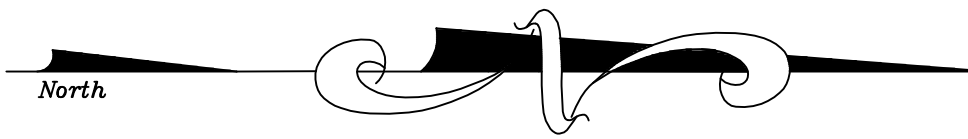
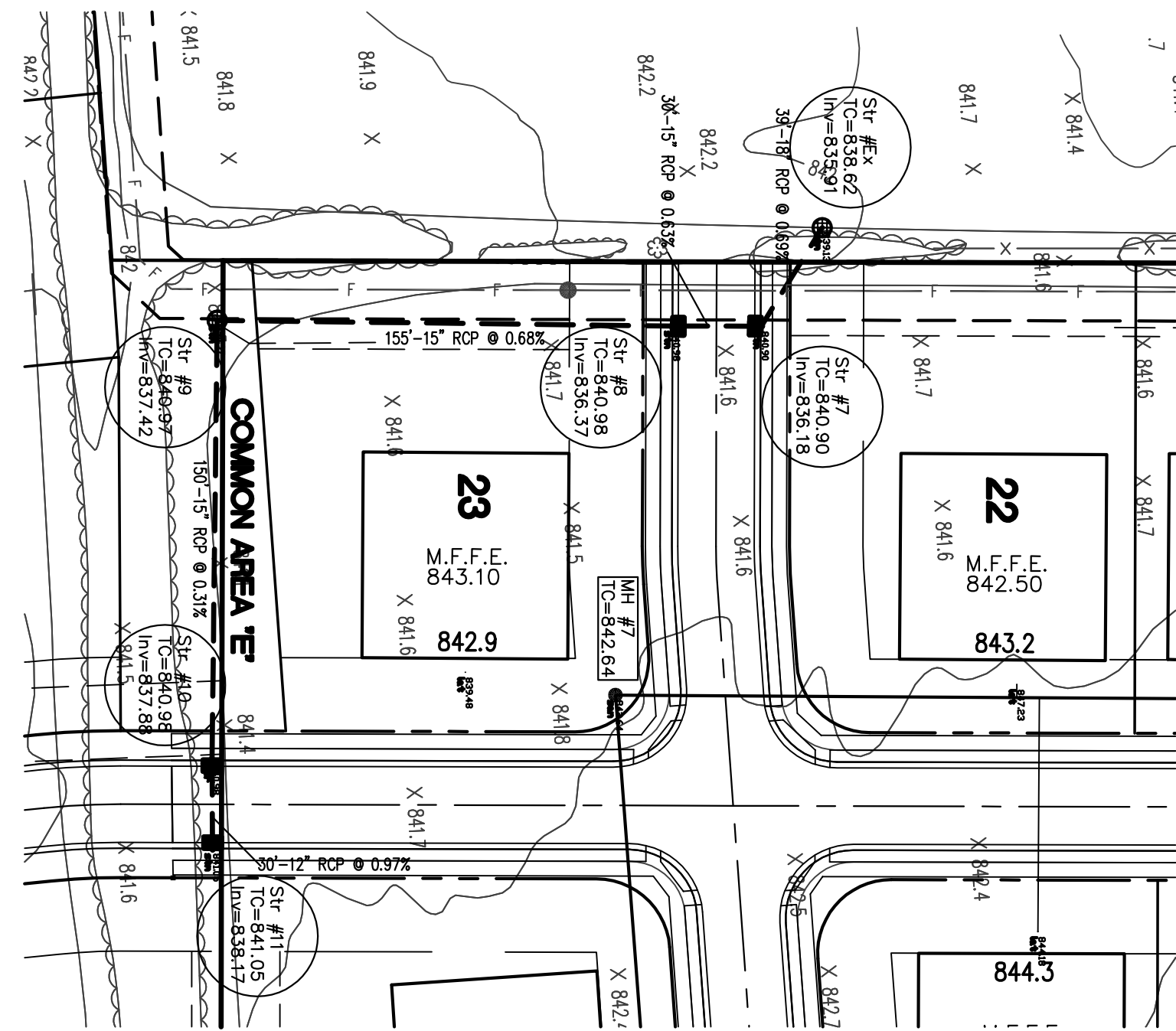
Business Address: *13110 Promise Road*  
*Fishers, IN. 46038*

Telephone Number: *(317) 841-3141*

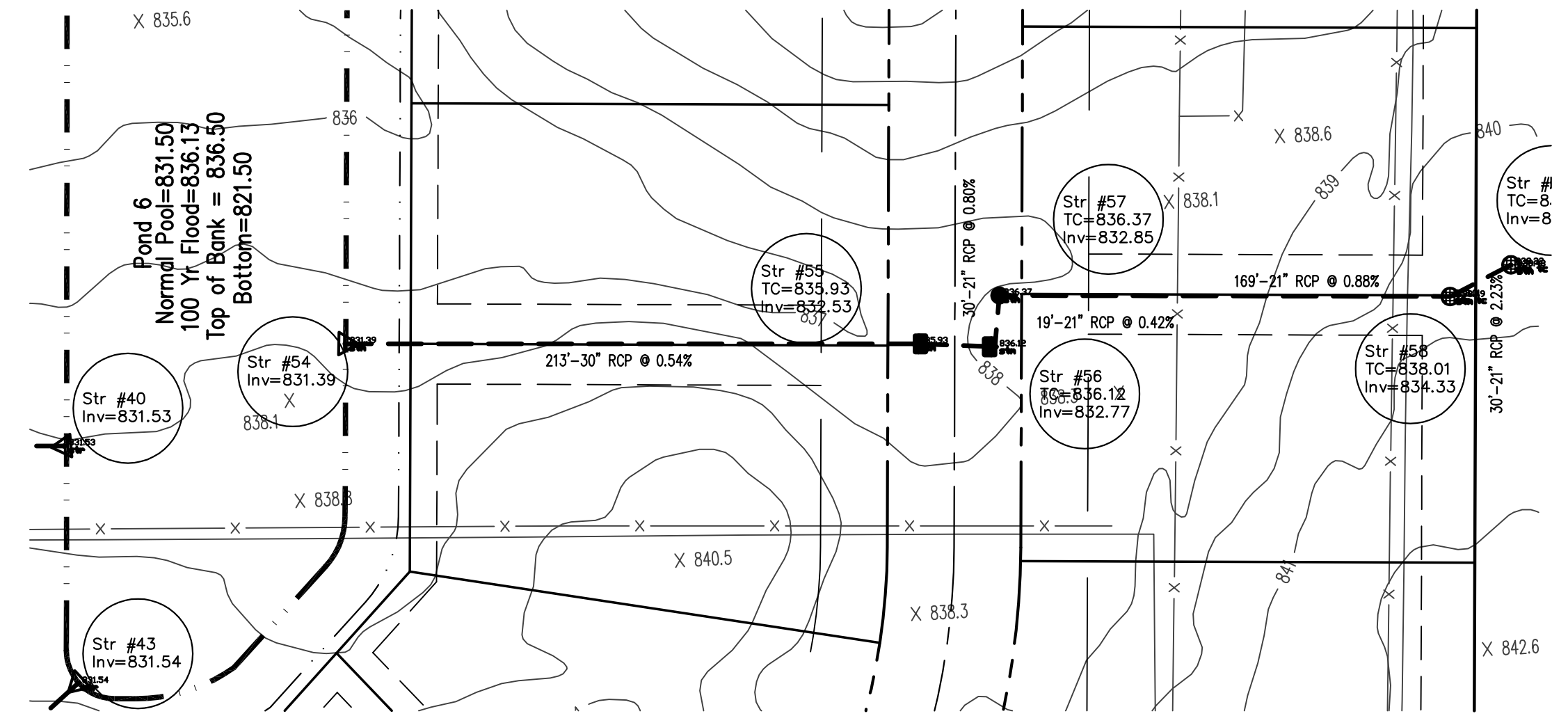


INDIANA REGISTRATION NUMBER

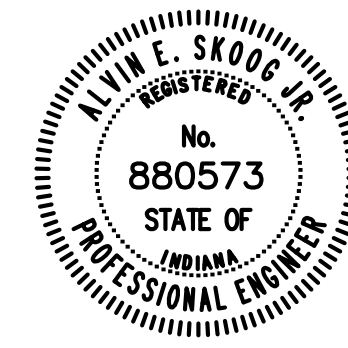
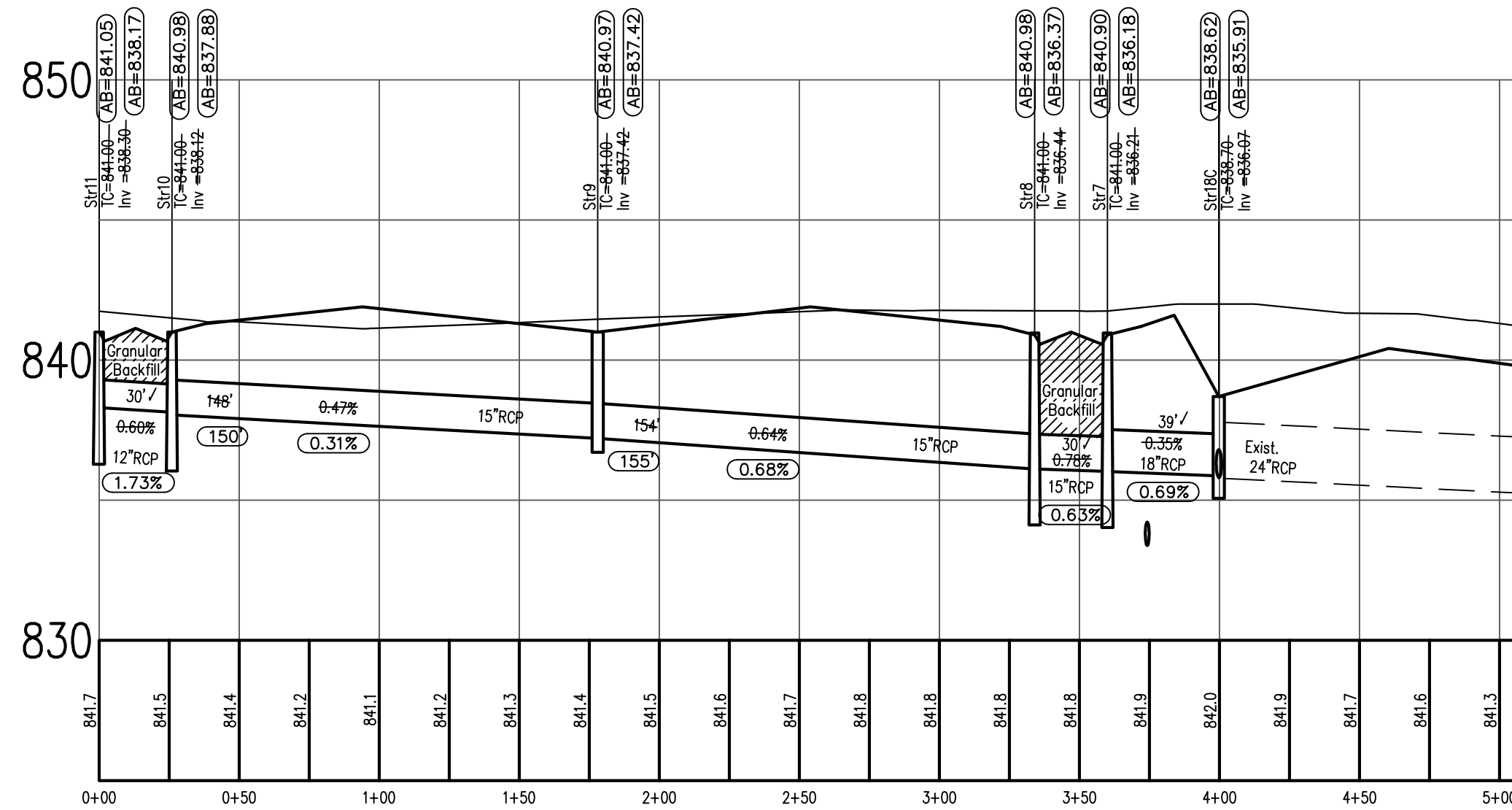
*880573*



This information was gathered for input into the Hamilton County Geographic Information System (GIS). This document is considered an official record of the GIS.  
 Entry Date: March 2009  
 Entered By: SLM



HAMILTON COUNTY SURVEYORS DETAILS  
 TO BE USED FOR THIS PROFILE FROM  
 STR54 - STR58



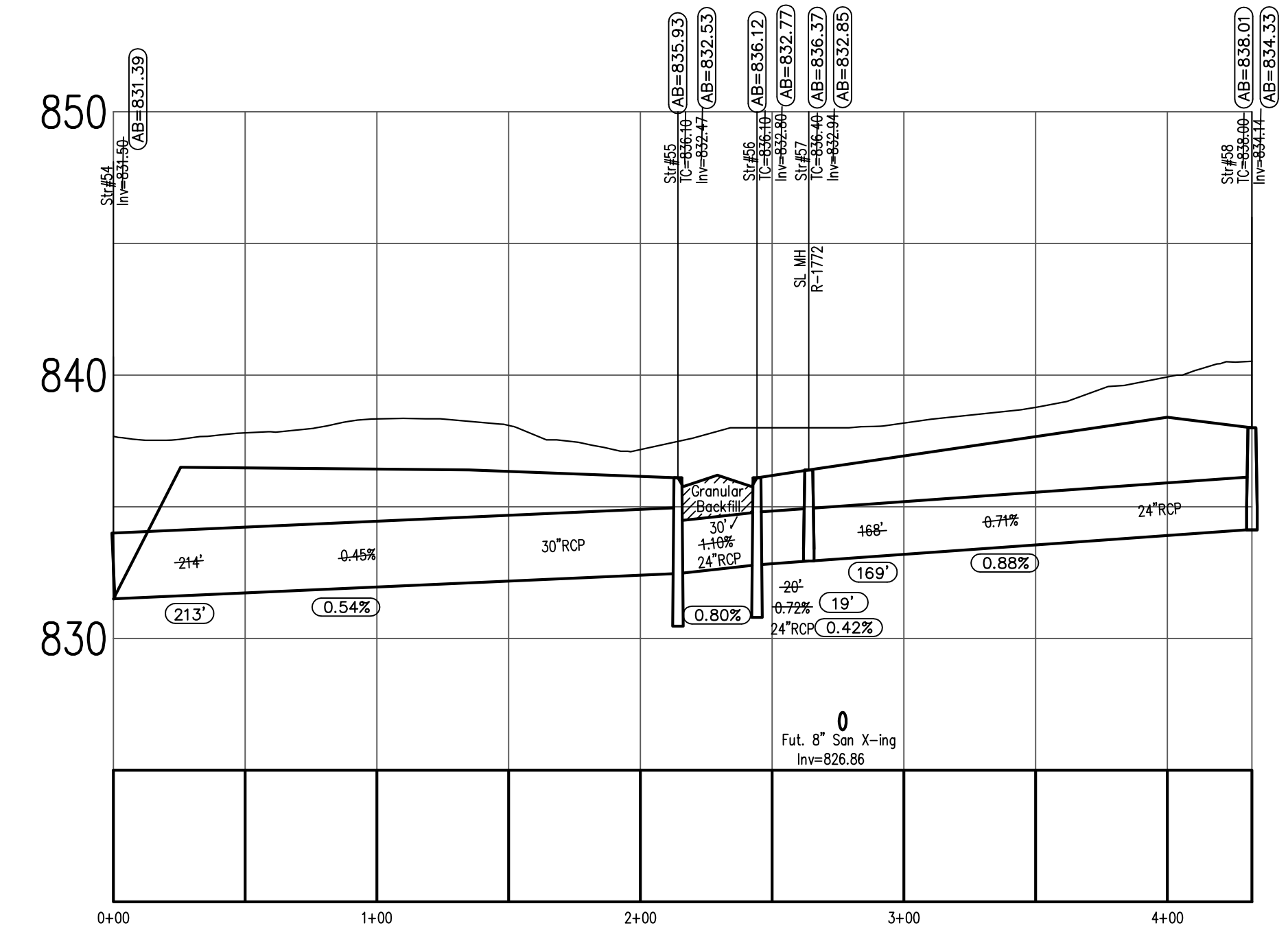
10/18/05

RECORD DRAWING CERTIFICATION

Certified By: Alvin E. Skoog

Representing Falcon Engineering, Inc.

I, the above signed, certify that to the best of my professional knowledge, information and belief, the locations, elevations and easements concerning storm and sanitary sewers were performed under my direct supervision.  
 NOTE: 1) Slope percentage shown represents a calculated figure. Sanitary sewer lateral stations and lateral lengths were drawn from the field location of the lateral (provided by the sanitary sewer contractor) to the "wye" per the sewer camera contractor's notes. 2) All storm sewers and sanitary sewers are located within designated easements.



Legend

- Sanitary Sewer with Manhole and 4" Lateral
- Storm Sewer with Inlet
- B.S.L.
- Building Setback Line
- Drainage, Utility and Sanitary Sewer Easement
- Handicap Curb Ramp Location (ADA Standards Apply)
- 4" Concrete Sidewalk
- Stop Sign

Local Benchmark: HSE 22

HSE disc in concrete set at the 104th St. entrance to Weatherstone on the west side of Saddlestone Drive. 30' W of BC on Saddlestone Drive and 40' N of BC on 104th St. Elev.=837.85 (NAVD 1988)

HSE NOTES:

1. Except for force mains, contractor to install concrete cradles when the vertical separation (as measured from the exterior of the pipes) between sanitary sewer facilities and storm sewers is 18" or less.

No.	Date	Revision

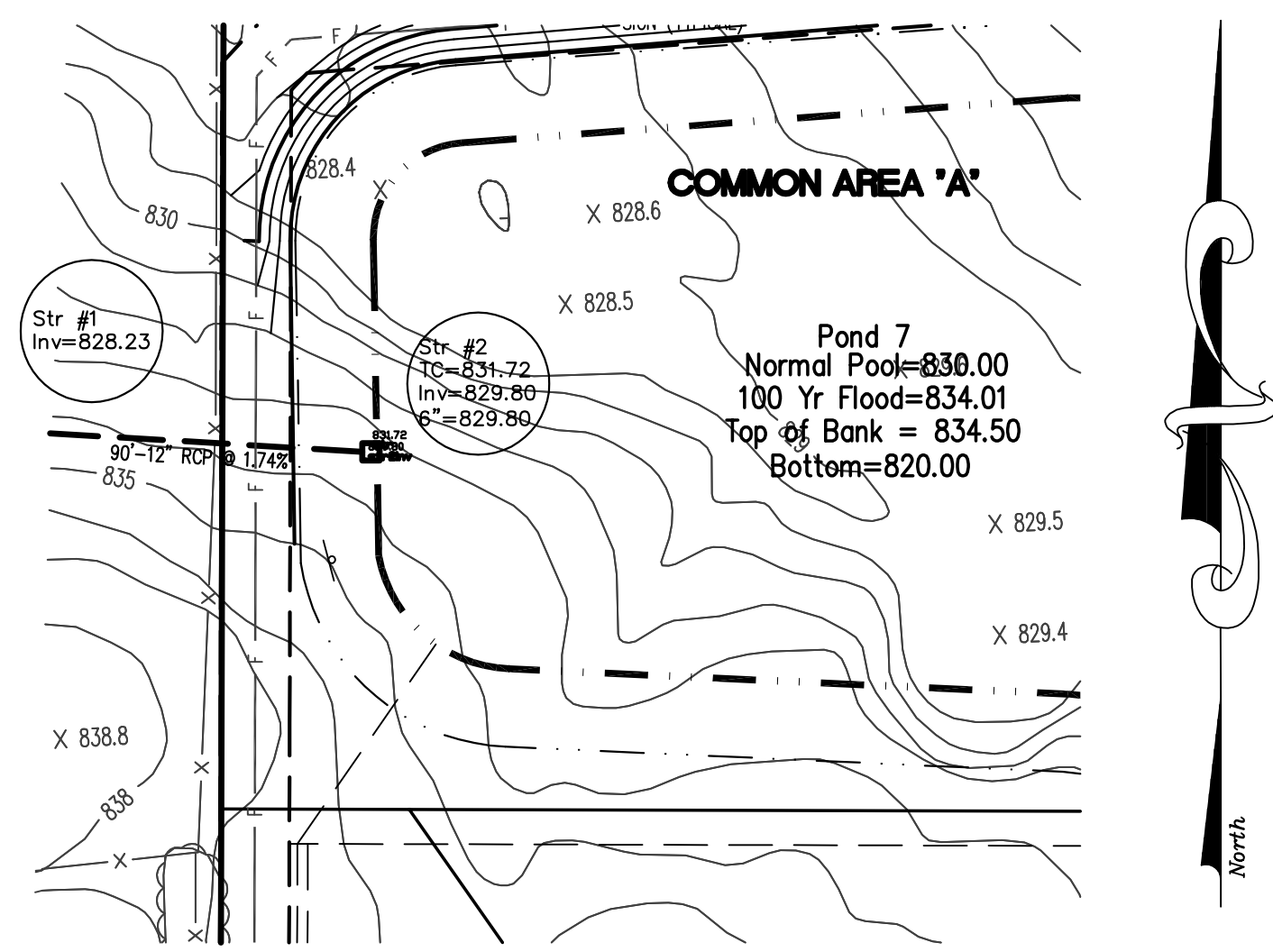
13110 Promise Road Noblesville, IN 46060  
 Phone: (317) 841-3141 Fax: (317) 841-9951

**"As-built" Storm Sewer Plan & Profiles**  
**Timberstone - Section 1**

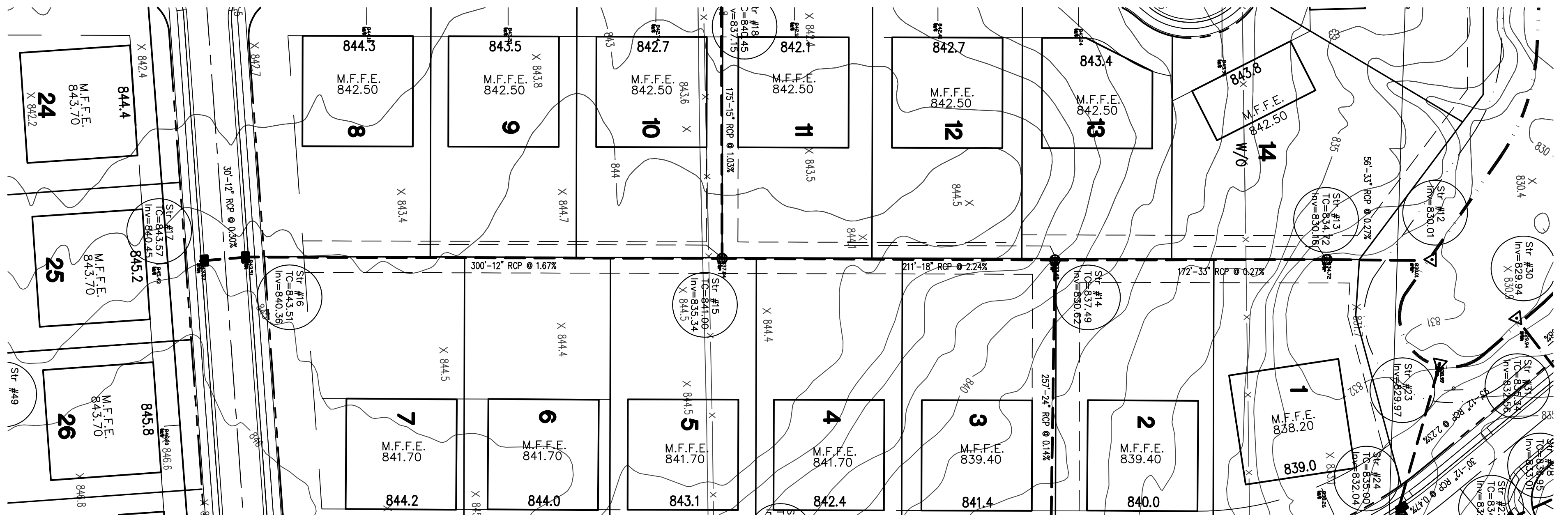
Town of Fishers Fall Creek Township Hamilton County Indiana

Design By: AES Drawn By: AES Checked By: AES Approved By: AES

Date	October, 2005
Job No.	121.3
Scale	1" = 50' 1" = 5'
Sheet No.	3 of 7

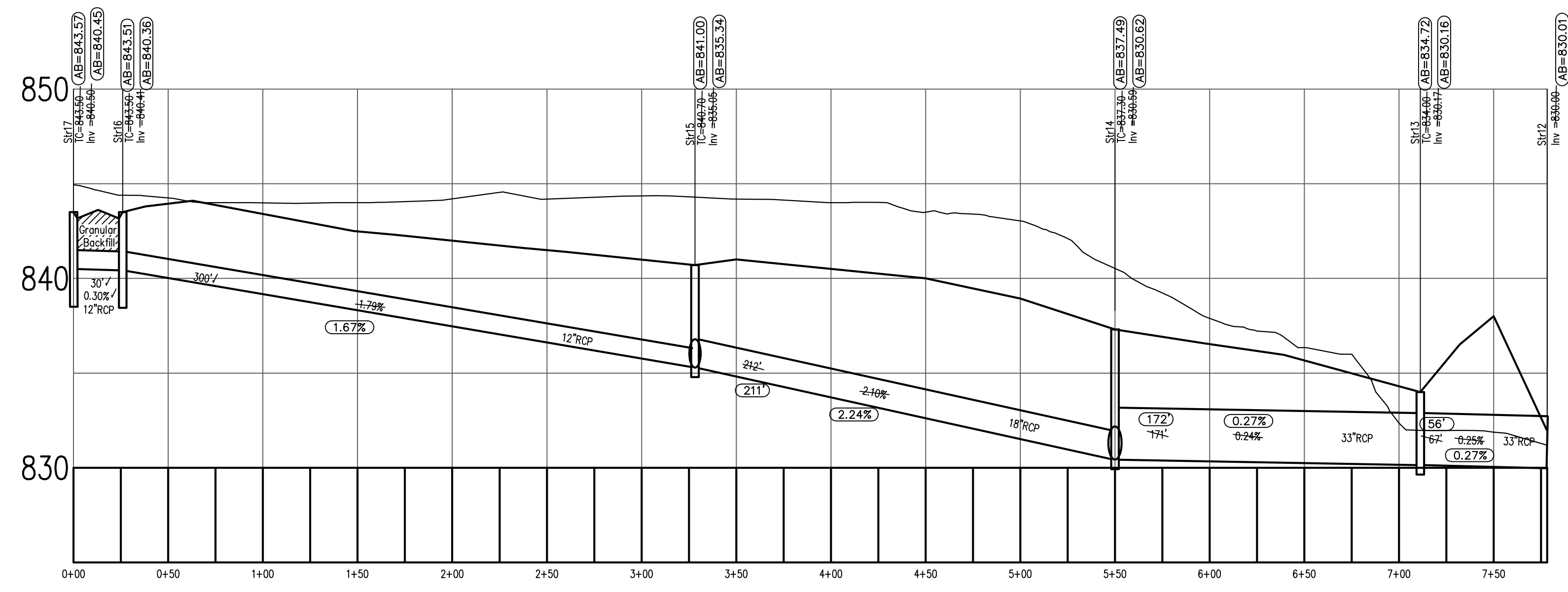
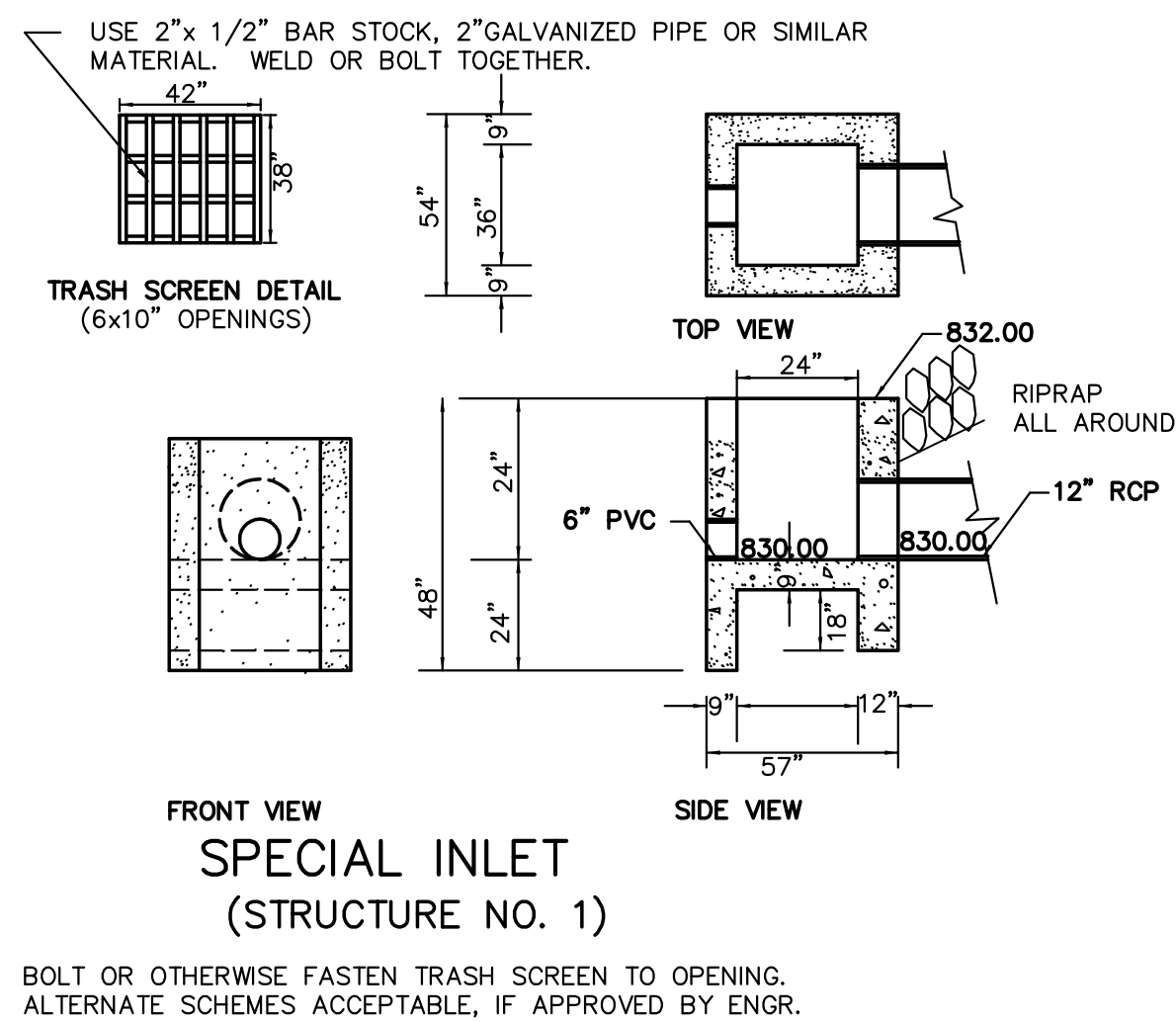
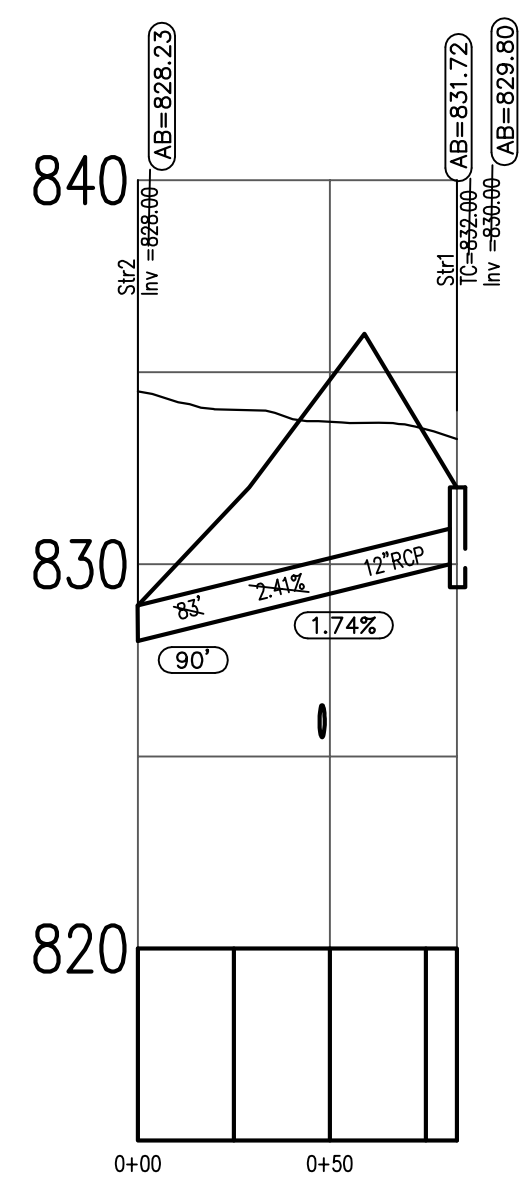


This information was gathered for input into the Hamilton County Geographic Information System (GIS). This document is considered an official record of the GIS.  
 Entry Date: March 2009  
 Entered By: SLM



HAMILTON COUNTY SURVEYORS DETAILS  
 TO BE USED FOR THIS PROFILE FROM STR1  
 - STR2

HAMILTON COUNTY SURVEYORS DETAILS  
 TO BE USED FOR THIS PROFILE FROM  
 STR12 - STR14

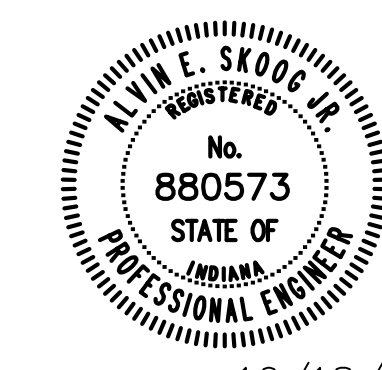


**Legend**

- Sanitary Sewer with Manhole and 6" Lateral
- Storm Sewer with Inlet
- B.S.L.
- D.U. & S.E.
- Handicap Curb Ramp Location (ADA Standards Apply)
- 4" Concrete Sidewalk
- Stop Sign

**Local Benchmark: HSE 22**  
 HSE disc in concrete set at the 104th St. entrance to Weatherstone on the west side of Saddlestone Drive. 30' W of BC on Saddlestone Drive and 40' N of BC on 104th St. Elev.=837.85 (NAVD 1988)

**HSE NOTES:**  
 1. Except for force mains, contractor to install concrete cradles when the vertical separation (as measured from the exterior of the pipes) between sanitary sewer facilities and storm sewers is 18" or less.



**RECORD DRAWING CERTIFICATION**

Certified By: Alvin E. Skoog

Representing Falcon Engineering, Inc.  
 I, the above signed, certify that to the best of my professional knowledge, information and belief, the locations, elevations and easements concerning storm and sanitary sewers were performed under my direct supervision.  
 NOTE: 1) Slope percentage shown represents a calculated figure. Sanitary sewer lateral stations and lateral lengths were drawn from the field location of the lateral (provided by the sanitary sewer contractor) to the "we" per the sewer camera contractor's notes. 2) All storm sewers and sanitary sewers are located within designated easements.

10/18/05

No.	Date	Revision

**falcon**  
ENGINEERING, INC.

13110 Promise Road Noblesville, IN 46060  
 Phone: (317) 841-3141 Fax: (317) 841-9951

**"As-built" Storm Sewer Plan & Profiles**  
**Timberstone - Section 1**

Town of Fishers Fall Creek Township Hamilton County Indiana

Design By: AES Drawn By: AES Checked By: AES Approved By: AES

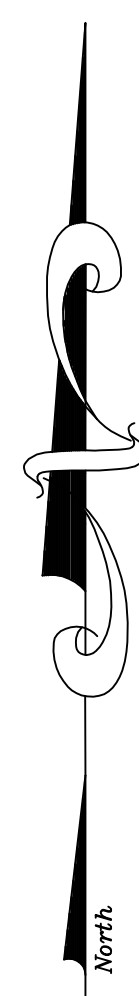
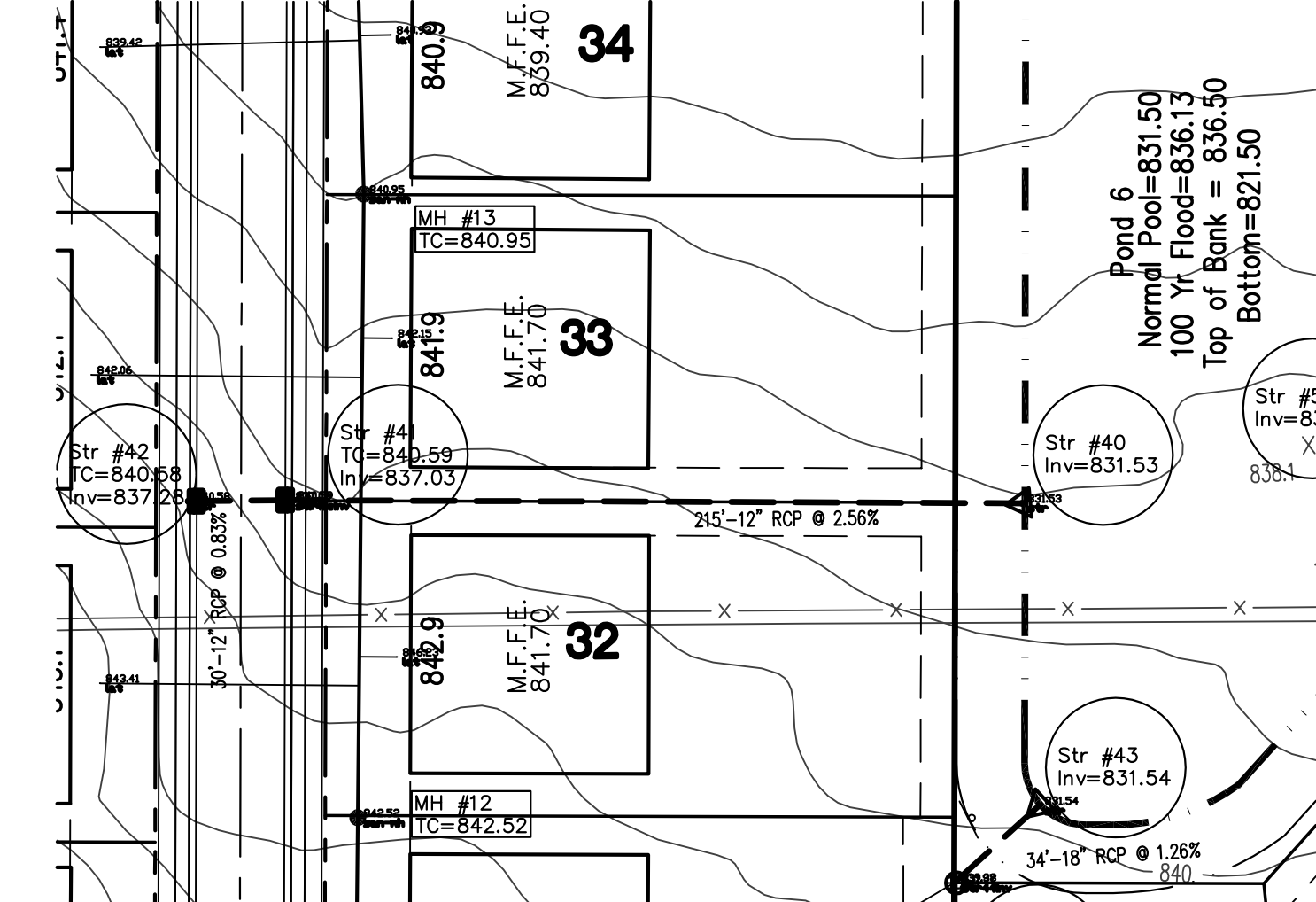
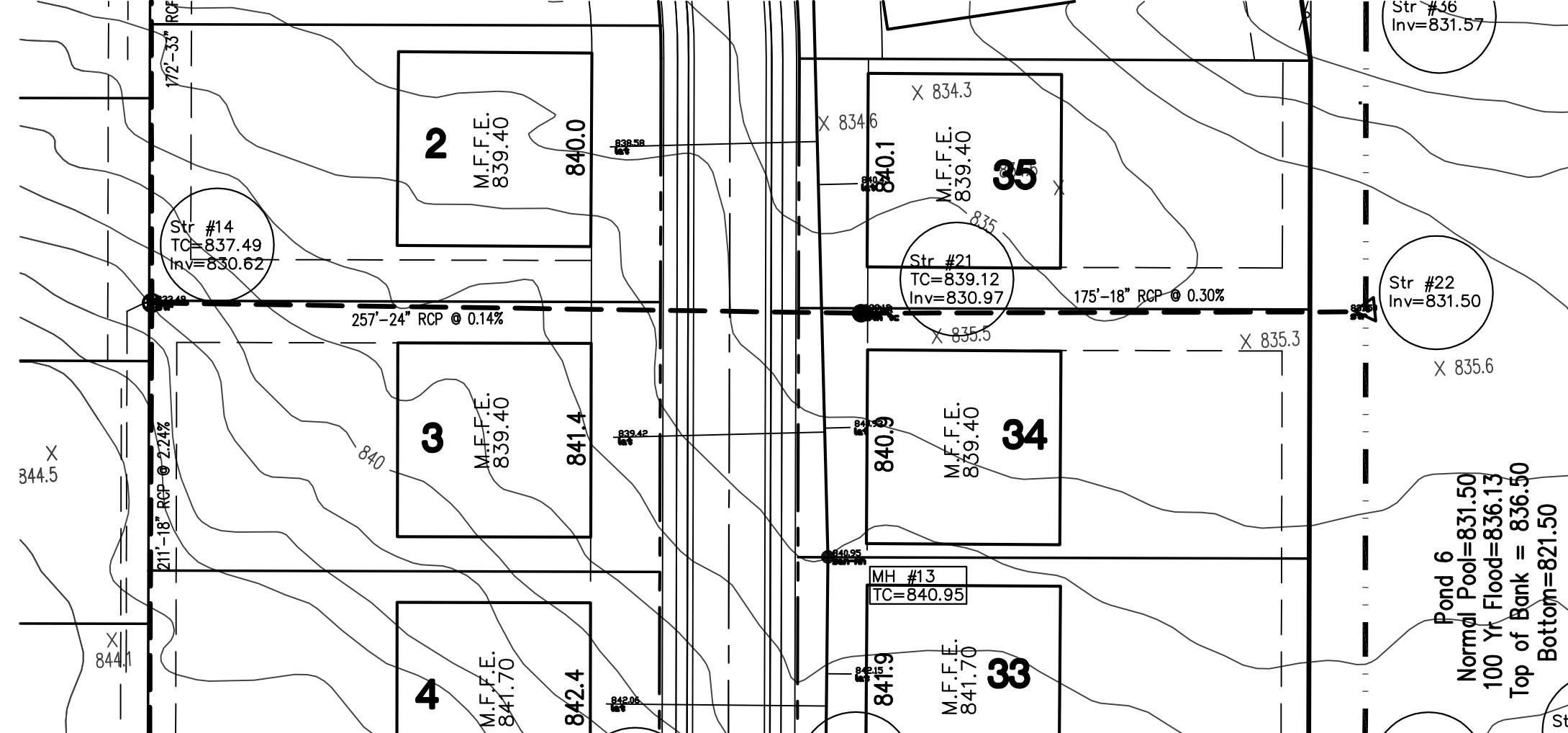
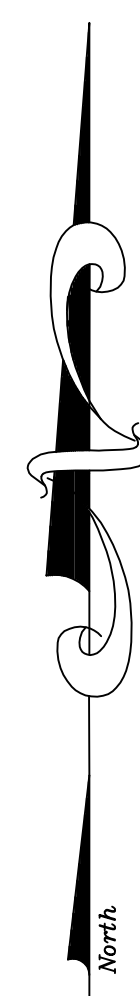
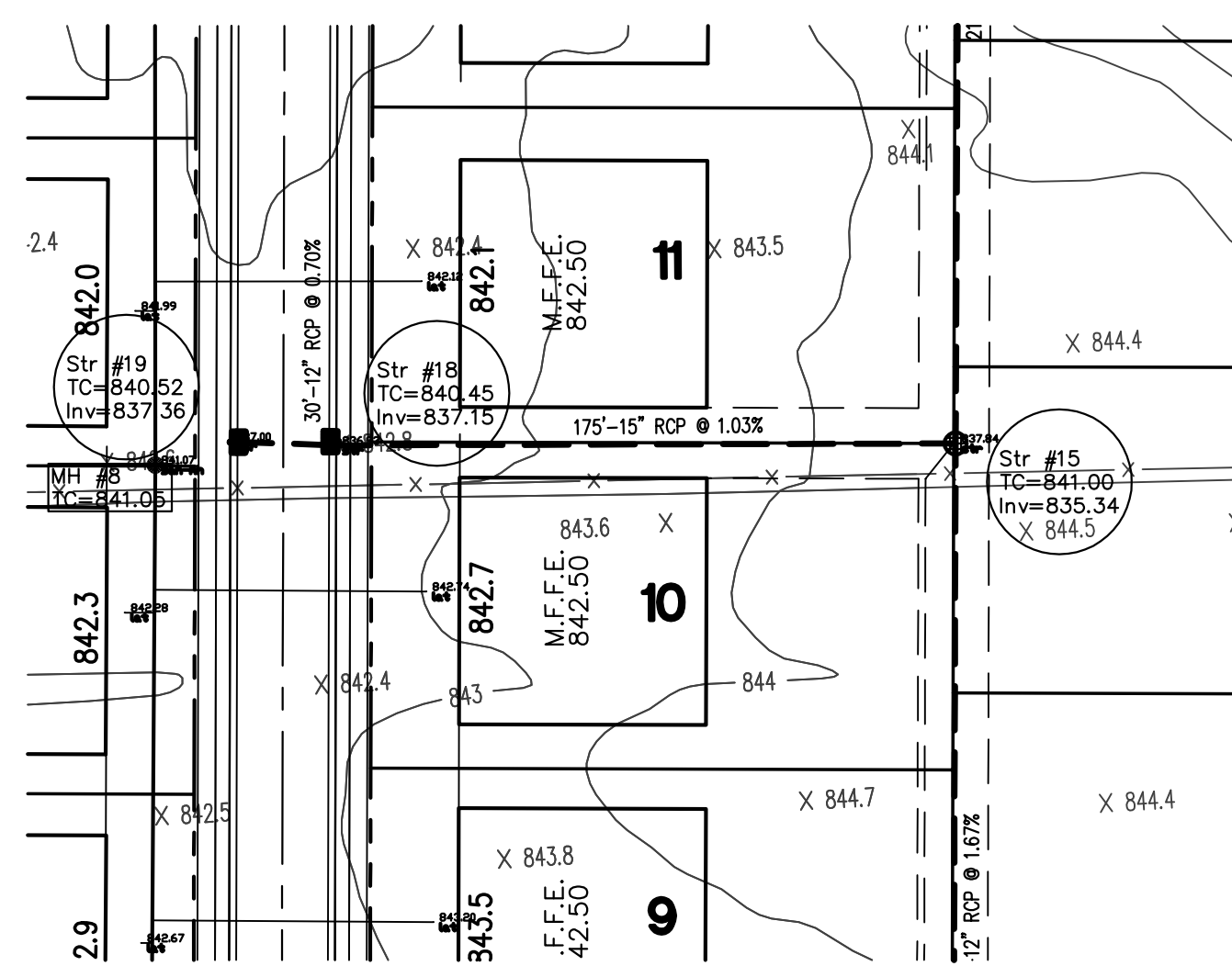
Date: October, 2005

Job No.: 121.3

Scale: 1" = 50'  
1" = 5'

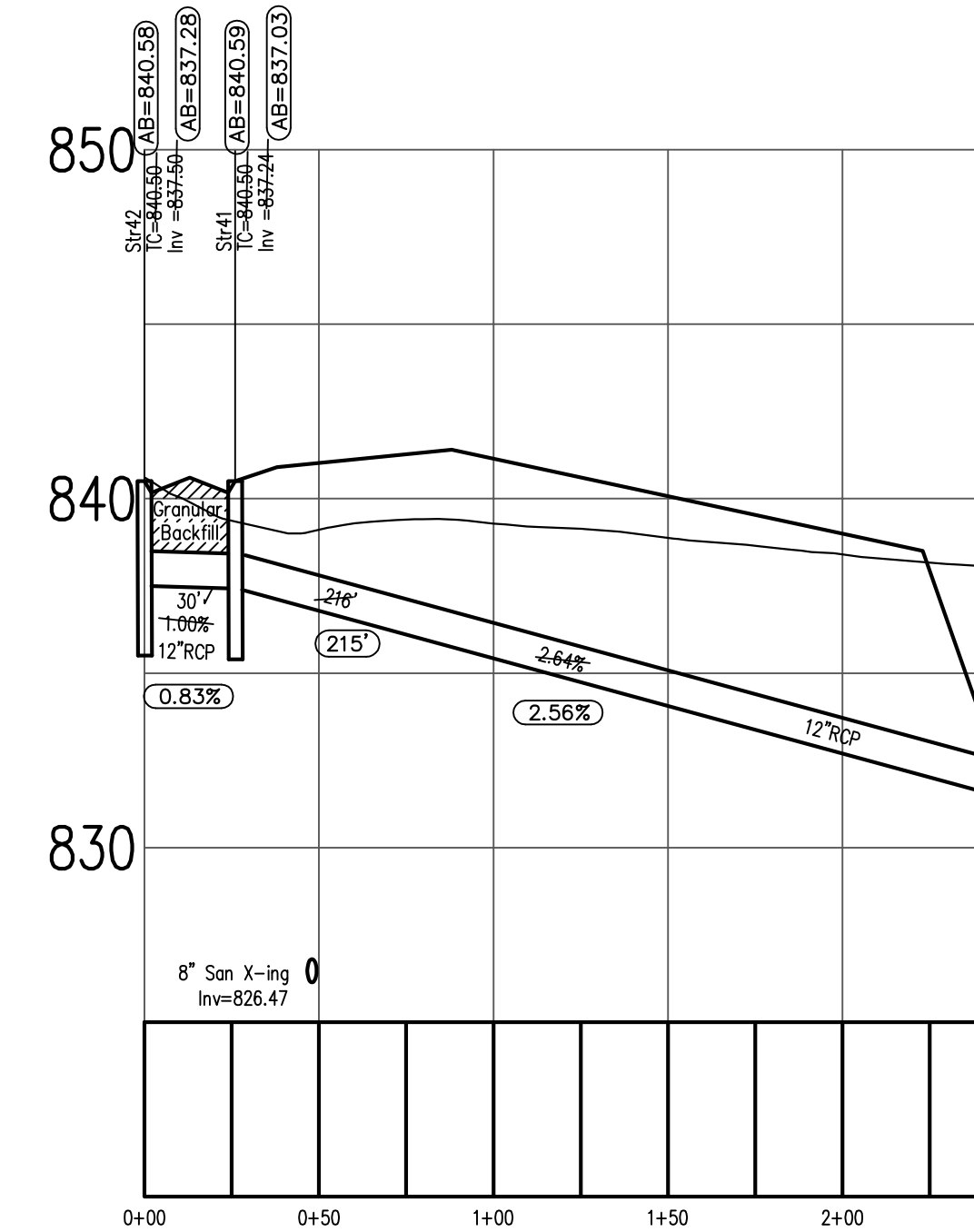
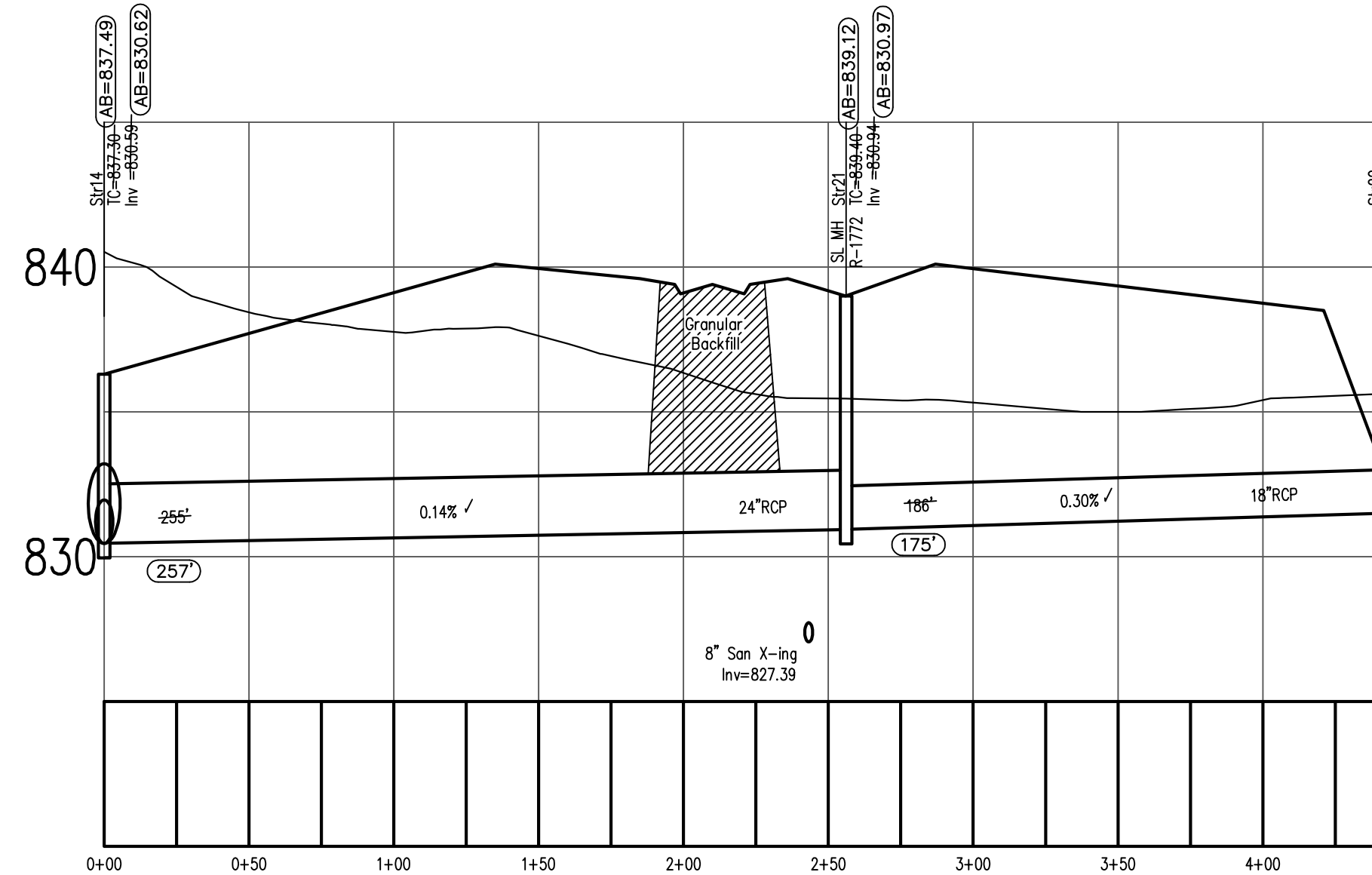
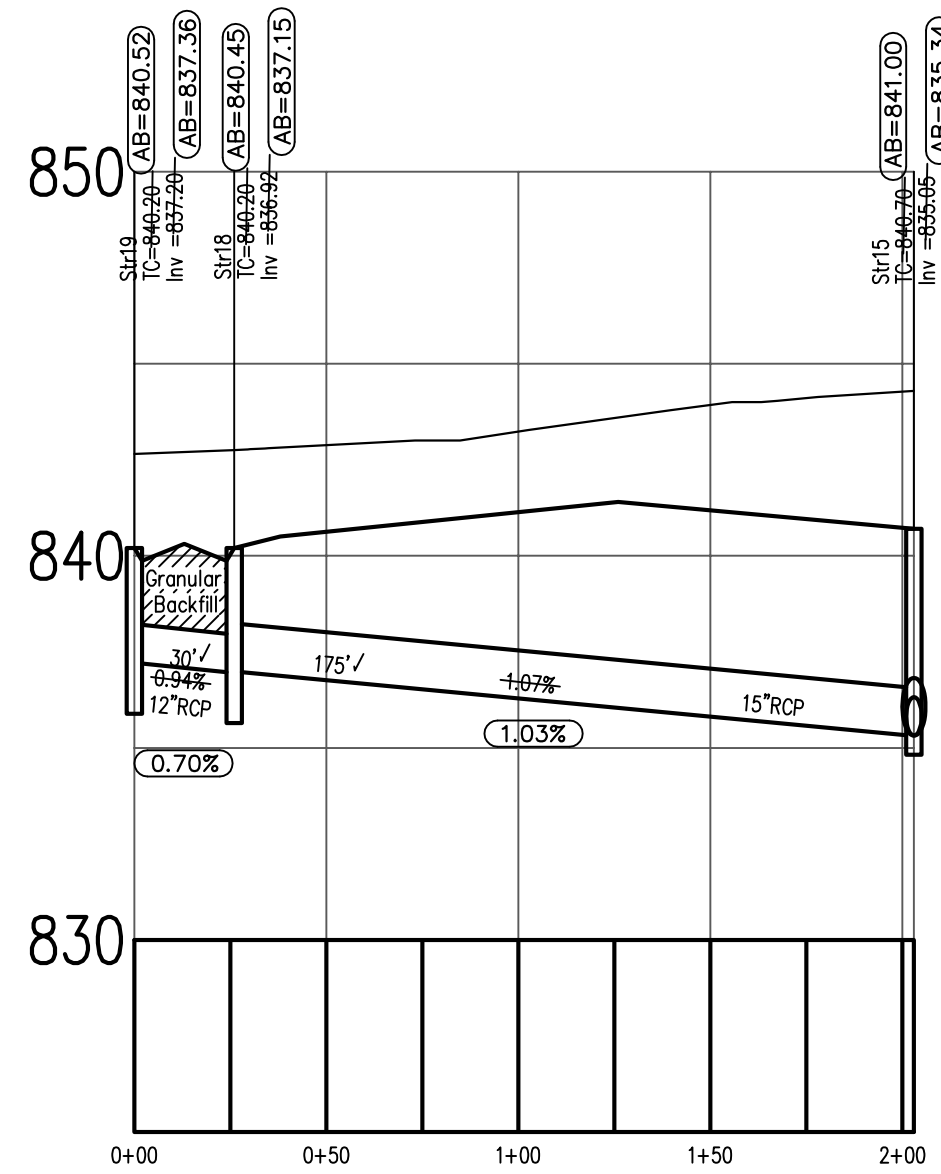
Sheet No.: 4 of 7





This information was gathered for input into the Hamilton County Geographic Information System (GIS). This document is considered an official record of the GIS.  
 Entry Date: March 2009  
 Entered By: SLM

HAMILTON COUNTY SURVEYORS DETAILS  
 TO BE USED FOR THIS PROFILE FROM  
 STR14, STR21 - STR22



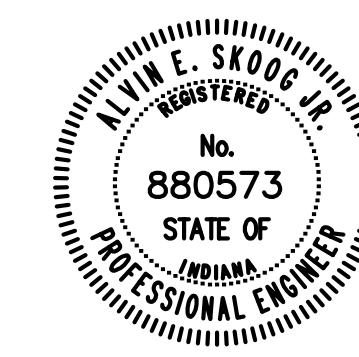
- Legend**
- Sanitary Sewer With Manhole and 6" Lateral
  - Storm Sewer with Inlet
  - B.S.L.
  - D.U. & S.E.
  - Handicap Curb Ramp Location (ADA Standards Apply)
  - 4" Concrete Sidewalk
  - Stop Sign

Local Benchmark: HSE 22

HSE disc in concrete set at the 104th St. entrance to Weatherstone on the west side of Saddlestone Drive. 30' W of BC on Saddlestone Drive and 40' N of BC on 104th St. Elev.=837.85 (NAVD 1988)

**HSE NOTES:**

1. Except for force mains, contractor to install concrete cradles when the vertical separation (as measured from the exterior of the pipes) between sanitary sewer facilities and storm sewers is 18" or less.



10/18/05

**RECORD DRAWING CERTIFICATION**

Certified By: *Alvin E. Skoog*

Representing Falcon Engineering, Inc.

I, the above signed, certify that to the best of my professional knowledge, information and belief, the locations, elevations and easements concerning storm and sanitary sewers were performed under my direct supervision.  
 NOTE: 1) Slope percentage shown represents a calculated figure. Sanitary sewer lateral stations and lateral lengths were drawn from the field location of the lateral (provided by the sanitary sewer contractor) to the "wye" per the sewer camera contractor's notes. 2) All storm sewers and sanitary sewers are located within designated easements.

No.	Date	Revision

**falcon**  
 ENGINEERING, INC.  
 13110 Promise Road Noblesville, IN 46060  
 Phone: (317) 841-3141 Fax: (317) 841-9951

"As-built" Storm Sewer Plan & Profiles			
Timberstone - Section 1			
Design By	Drawn By	Checked By	Approved By
AES	AES	AES	AES

Date	October, 2005
Job No.	121.3
Scale	1" = 50' 1" = 5'
Sheet No.	5 of 7